

# CLEANING AND CARE INSTRUCTIONS

## REGUPOL COMMERCIAL LRT AND LRP



### Preventive measures

To minimize the amount of dirt entering the building, effective entrance matting systems should be installed in all entry areas. These mats help reduce the amount of dirt brought inside, lowering overall cleaning needs and extending the lifespan of the floor covering. They should be positioned so that it is not possible to enter the premises without stepping on them. During construction, dust, sand, and other loose debris should be removed regularly by sweeping or vacuuming. Throughout ongoing construction activities, the floor covering must be protected using suitable protective sheets and safeguarding measures. For routine upkeep, maintenance cleaning should be adapted to the specific area, the volume of foot traffic, and the resulting level of soiling to ensure appropriate and effective care.

### Final construction cleaning

Before the actual cleaning begins, all loose dirt and debris should be removed through coarse cleaning by sweeping or vacuuming. The final cleaning after construction can then be carried out either mechanically or manually. For this process, a cleaning solution mixed at a ratio of 1:250 using Jeikner JR17 and cold, clear water (40 ml per 10 liters) is recommended. \* When cleaning mechanically a brush roller machine such as the Duplex 340 with a soft brush should be used. In the first step, the prepared cleaning solution is applied to loosen the dirt, which is then partially removed using the machine's mop-up function. In the second step, the machine should be filled with cold, clear water and set again to the mop-up function to extract the dirty water along with any cleaning agent residues. For manual cleaning, a two-step method using a mop with a suitable microfiber cloth is advised. First, the dirt is loosened and partially absorbed with the prepared cleaning solution. During the second wiping process with cold, clear water, the dirty water and remaining cleaning residues are removed. Depending on the degree of soiling, the microfiber cloth should be rinsed regularly, and in cases of heavy dirt accumulation, it may need to be replaced at frequent intervals.

### Maintenance cleaning

Loose dirt should be removed regularly by sweeping, vacuuming, or damp mopping. For **REGUPOL Commercial LRT/LRP** surfaces, maintenance cleaning of adhering dirt can be performed either manually with a mop and suitable microfiber cloth or mechanically using a brush roller machine such as the Duplex 340 with a soft brush. Manual maintenance cleaning may be carried out as a one- or two-step mopping procedure, depending on the level of soiling. For more stubborn or persistent dirt, mechanical maintenance cleaning is recommended, using a two-step

process with the brush roller machine to ensure thorough and effective results.

### Manual maintenance cleaning

#### One-step wiping method (for light soiling)

For light soiling, a one-step wiping method is sufficient. This process involves using a mop fitted with a suitable microfiber cloth and cleaning the floor covering with cold, clear water. Begin by filling a bucket with clean, cold water, then wipe the surface in a standard mopping motion. The microfiber cloth should be rinsed regularly, depending on how much dirt has been collected, to maintain effective cleaning performance. After wiping, all dirty water must be removed from the floor, for example with absorbent cloths or a wet vacuum cleaner. It is important to ensure that no excess water remains on the surface to prevent unnecessary moisture exposure.

#### Two-step wiping method (for heavier soiling)

For more thorough cleaning, a two-step wiping method is recommended. This procedure uses a mop with a suitable microfiber cloth together with a cleaning solution prepared by mixing Jeikner JR17 at a ratio of 1:500 with cold, clear water (20 ml per 10 liters). \* In the first wiping process, the prepared solution is applied using the microfiber mop in a standard motion to loosen and absorb the dirt. The microfiber cloth should be rinsed regularly depending on the degree of soiling, and in the case of heavy dirt accumulation, it may be necessary to replace the cloth at regular intervals.

After wiping, the dirty water should be removed completely using absorbent textiles or a wet vacuum cleaner. The second wiping process is then carried out using cold, clear water without any cleaning agent to remove remaining dirt and residues from the cleaning solution. The floor covering should again be wiped in a standard manner, ensuring that all dirty water and cleaner remnants are fully extracted. It is essential to avoid leaving excessive water on the floor surface to prevent unnecessary moisture exposure.

#### Mechanical maintenance cleaning (for stubborn soiling)

For mechanical maintenance cleaning, the use of a brush roller machine - such as Duplex 340 equipped with a soft brush - is recommended. The cleaning solution should be prepared - by mixing Jeikner JR17 at a ratio of 1:500 with cold, clear water (20 ml per 10 liters). \*

In the **first cleaning step**, the machine's tank is filled with the prepared solution, and the device is set to the mop-up function, which absorbs the dirty water while cleaning. The cleaning process can then begin, and the degree of soiling can be monitored through the recovery tank.

# CLEANING AND CARE INSTRUCTIONS

## REGUPOL COMMERCIAL LRT AND LRP



In the **second cleaning step**, the tank is refilled with cold, clear water without detergent, and the cleaning process is repeated using the mop-up function to remove the dirty water along with any remaining cleaning agent residues. This procedure should be repeated until the desired cleaning result is achieved. If a high level of dirt remains visible after the first cleaning step, an additional cleaning cycle using the cleaning solution may be beneficial to ensure a satisfactory outcome. If the soiling cannot be removed or loosened using either the manual or mechanical maintenance methods described above, we recommend a mechanical deep cleaning of the floor covering.

### Deep Cleaning

Before starting the cleaning procedure, coarse dirt and loose debris should be removed by sweeping or vacuuming. Mechanical intensive cleaning is carried out using a brush roller machine, such as Duplex 340 fitted with a soft brush. The cleaning solution should be prepared

### Quick Overview of Cleaning Types:

#### 1. Initial Cleaning (Post-Installation Cleaning)

- When: **One-time** after installation, before first use
- Cleaner: Jeikner JR17 mixed at a ratio of 1:250 with cold, clean water\*
- Remove coarse dirt (sweeping/vacuuuming)
- Manual cleaning (two-step with mop) or machine cleaning (brush roller machine with soft brush)

#### 2. Routine Maintenance Cleaning

- Remove loose dirt (sweeping/vacuuuming)
- Light soiling: manual, one-step cleaning (mop with cold, clean water)
- Heavier soiling: manual, two-step cleaning (1st cleaning solution, 2nd cold, clean water)
- Heavy/stubborn soiling: machine cleaning with brush roller machine, two-step process
- (1st cleaning solution, 2nd clean water)

by mixing Jeikner JR17 at a ratio of 1:200 with cold, clear water (50 ml per 10 liters). \* In the first cleaning step, the machine's tank is filled with the prepared solution and the cleaning process begins with the device set to the mop-up function, allowing dirty water to be absorbed immediately. The level of soiling can be monitored through the recovery tank. In the second step, the tank is refilled with cold, clear water without detergent, and the cleaning procedure is repeated using the mop-up function to remove dirty water and any remaining cleaning agent residues from the floor covering. The third cleaning step involves refilling the tank once more with cold, clear water and repeating the cleaning process to ensure all remaining dirt and detergent traces are fully removed. These steps should be repeated until a satisfactory result has been achieved. If heavy soiling is still apparent after the first cleaning step, an additional cycle using the cleaning solution may support achieving the desired cleaning outcome.

#### 3. Deep Cleaning

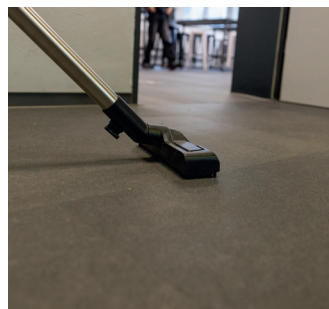
- When: For **heavy** or persistent soiling when routine maintenance cleaning is no longer sufficient
- Cleaner: Jeikner JR17 mixed at a ratio of 1:200 with cold, clean water\*
- Remove coarse dirt (sweeping/vacuuuming)
- Machine cleaning with brush roller machine
- Multi-step process:
  1. Clean with cleaning solution
  2. Rinse with clean water
  3. Rinse again with cold, clean water→ Repeat process if necessary until the floor is clean

#### Important Notes (Summary)

- Always dose cleaning solutions according to the recommended mixing ratios
- Completely remove dirty solution (do not leave excessive residual moisture on the floor)
- Regular maintenance extends the service life and visual appearance of the flooring



Overview of cleaning agents and recommended equipment



Vacuum cleaner for removing coarse dirt



Mop with suitable microfiber pad for manual cleaning



Brush roller machine for mechanical cleaning

# CLEANING AND CARE INSTRUCTIONS

## REGUPOL COMMERCIAL LRT AND LRP



### IMPORTANT INFORMATION

These cleaning instructions are based on the current state of knowledge of REGUPOL Germany GmbH & Co. KG and are updated regularly. Please ensure that you are always using the latest valid version, which is available in the download section of our website. Neither the manufacturer nor the distributor of REGUPOL Commercial flooring products, nor the suppliers of the cleaning agents or machines used, can directly influence the correct execution of the cleaning process. Due to the wide variety of soiling types and local conditions, no complete guarantee can be given regarding the cleaning results. These instructions represent a non-binding recommendation; no warranty is assumed for the achieved cleaning results. When using cleaning agents, the specified mixing ratios must be strictly observed. Overdosing must be avoided, as it may lead to re-soiling or discoloration of the flooring. All cleaning residues must be completely removed. A foam-free dirty solution can be used as a simple visual check; for more precise verification, the pH value of the dirty solution can be measured and should ideally be 7 (pH neutral). Only suitable and coordinated cleaning machines and cleaning agents may be used. Responsibility for proper execution of the cleaning process and for the resulting outcome lies with the respective user or contractor.

\* Alternatively, other pH-neutral cleaners may be used. However, these must be approved in advance by REGUPOL Germany GmbH & Co. KG.